

Specification RHZ\_v23b\_ind

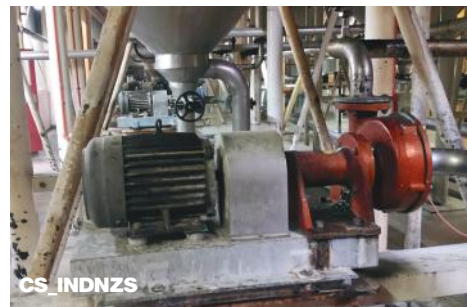
# HEAVY DUTY YARDMASTER® HORIZONTAL SUCTION PUMP

- The Yardmaster Horizontal Suction Pump is an alternative where the vertical mount pumps are not a suitable solution
- Using a simple bearing pedestal design direct coupled to an electric motor, these pumps operate a 4" suction inlet
- With a high grade mechanical seal installed, the bearings are protected from your liquid
- Performance figures are equivalent to the standard Yardmaster pump range
- With a more industrial based market application, the Yardmaster Horizontal Suction Pump is available in stainless steel or standard cast iron
- Designed and manufactured in New Zealand for New Zealand conditions

## Ideal for...

Ideal in situations where the vertical mount pumps are not a suitable solution

## Applications & Case Studies



### CS\_DEN01

Horizontal pump in chamber beside steel above ground tank

### CS\_INDNZS

NZ Starch - Transfer of maize and wastewater in the manufacture of starch.

## Product Codes

### DESCRIPTION

### CODE

#### LOW SPEED TRANSFER PUMPS with 32bs Mechanical Seal

Yardmaster horizontal mount pump with motor; RH3H, 2.2kW, 1400rpm  
Yardmaster horizontal mount pump with motor; RH4H, 4kW, 1400rpm  
Yardmaster horizontal mount pump with motor; RH6H, 7.5kW, 1400rpm

RH3H/32  
RH4H/32  
RH6H/32

#### HIGH SPEED IRRIGATION PUMPS with 32bs Mechanical Seal

Yardmaster horizontal mount pump with motor; RH5SH, 4kW, 2800rpm  
Yardmaster horizontal mount pump with motor; RH5BH, 5.5kW, 2800rpm  
Yardmaster horizontal mount pump with motor; RH6AH, 7.5kW, 2800rpm  
Yardmaster horizontal mount pump with motor; RH7H, 11kW, 15kW, 18.5kW, 2800rpm  
Yardmaster horizontal mount pump with motor; RH8H, 15kW, 18.5kW, 22kW, 2800rpm  
Yardmaster horizontal mount pump with motor; RH9H, 18.5kW, 22kW, 2800rpm  
Yardmaster horizontal mount pump with motor; RH10H, 22kW, 2800rpm

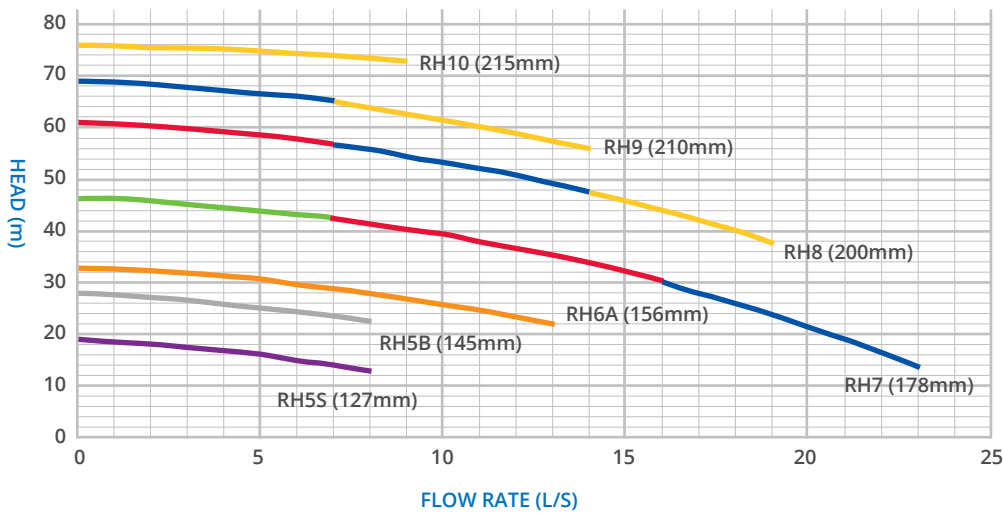
RH5SH/32  
RH5BH/32  
RH6AH/32  
RH7H/32-xx  
RH8H/32-xx  
RH9H/32-xx  
RH10H/32

Specifications are subject to change without notice

xx = Required Power (kW)

The performance curves stated below are those for water. When slurries, manures and effluents are to be pumped, delivery, head and power will alter. For viscous liquid-solid combinations seek assistance from your agent or contact Reid & Harrison direct. Calculations can be made that will give details of the size of pump required for the task and specifications of performance.

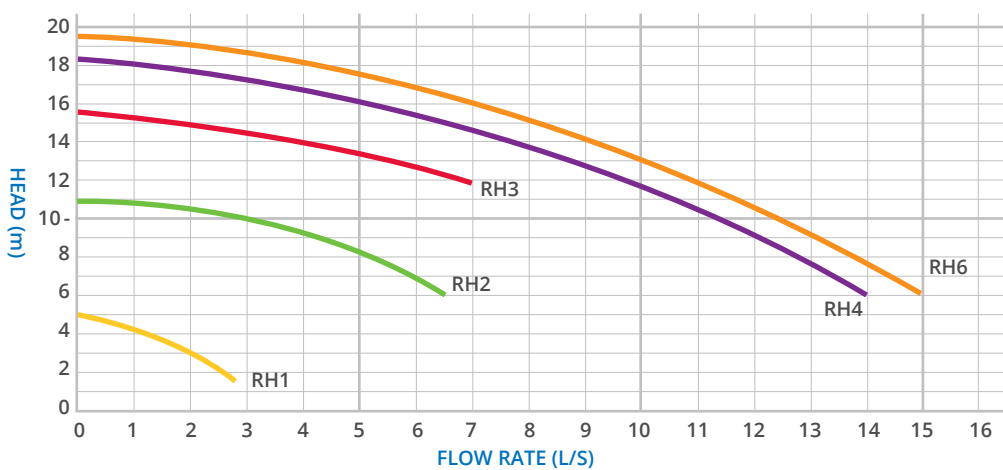
### Performance Curves - TWO POLE (2800 rpm)



	kW	HP
	4	5
	5.5	7.5
	7.5	10
	11	15
	15	20
	18.5	25
	22	30

(Impeller Size)

### Performance Curves - FOUR POLE (1400 rpm)



	IMP	kW	HP
RH1	150	0.75	1
RH2	178	1.5	2
RH3	200	2.2	3
RH4	215	4	5
RH6	220	7.5	10

